



The Iris at Sandy Pond

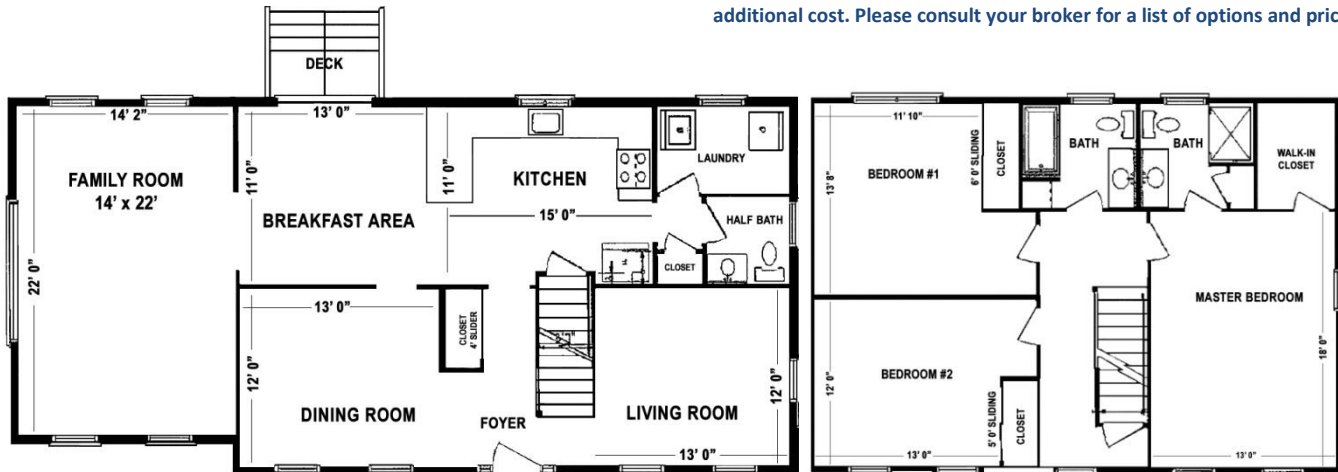
Your ENERGY STAR® efficient three bedroom, 2.5 bath home on an acre of land is waiting for you at Sandy Pond Estates in Ayer. With views of Mount Wachusett, this property has specific open spaces designed for privacy and walking trails to Long Pond and the conservation habitat for the Spotted and Blanding's Turtle.

Features:

- ◆ Quality construction using only energy efficient materials
- ◆ Spacious kitchen and breakfast area
- ◆ Large family room with a cathedral ceiling
- ◆ Convenient first floor laundry room
- ◆ Formal dining and living rooms
- ◆ Large master bedroom with walk-in closet and master bathroom
- ◆ Approximately 2090 square feet of living space
- ◆ Two car garage under the family room
- ◆ Town sewer, town water and natural gas



Pictures used in this document include options that are available at an additional cost. Please consult your broker for a list of options and prices.



DESIGNED TO EARN THE ENERGY STAR

The estimated energy performance for this design meets US EPA criteria. The building will be eligible for ENERGY STAR after maintaining superior performance for one year.